

幻想曲
秦·兵馬俑

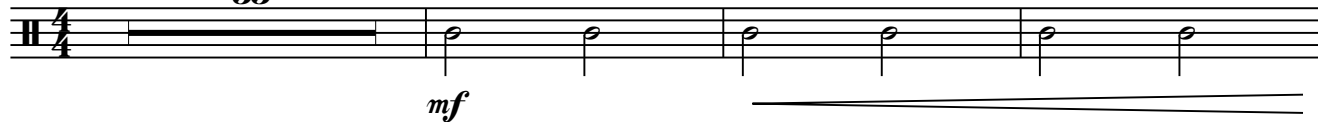
彭修文

一、軍整肅，封禪遨遊幾時休

不快的進行

[大鈸]

33



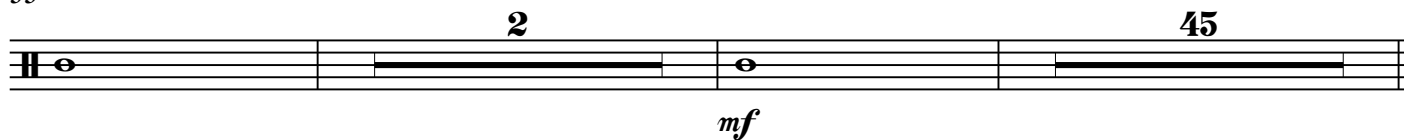
37



47



55



2

幻想曲《秦·兵馬俑》- 大鈸 中鑼

104 小快板，緊張地 ♩ = 144

5

f

112

威武雄壯地

116

ff

120

124 堂皇絢麗，有氣派地

mf

128

132

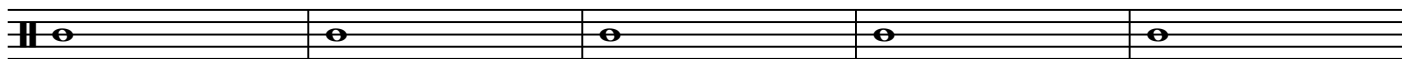
136

(揉奏)

mp

140

145



150

漸慢

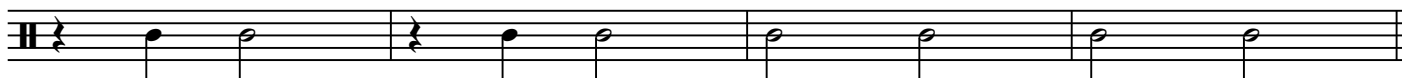
慢起漸快



166



170



174



188

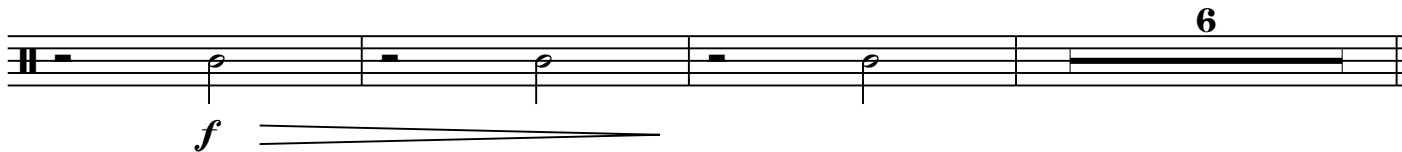


192



逐漸地慢，弱

196

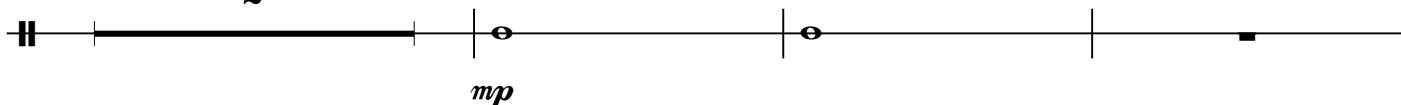


二、春閨夢，征人思歸相思苦

205 緩慢，寂靜地

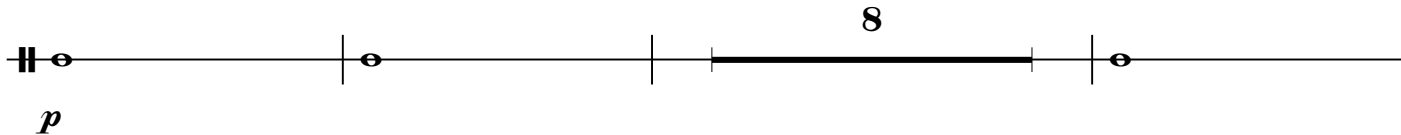
2

[中鑼] (鑼邊)



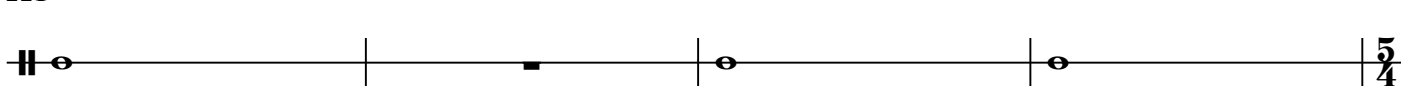
musical notation for measure 205, starting with a double bar line and a fermata, followed by a half note, a quarter note, and a quarter rest. The dynamic marking *mp* is indicated below the staff.

210



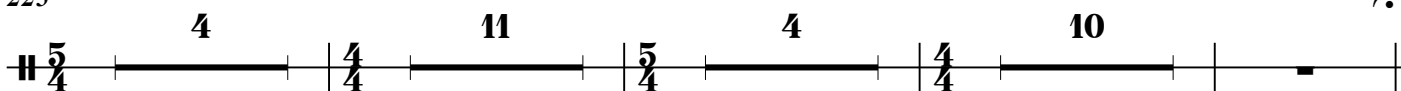
musical notation for measure 210, starting with a half note, followed by a quarter note, a quarter rest, and a half note. The dynamic marking *p* is indicated below the staff.

221



musical notation for measure 221, starting with a half note, followed by a quarter rest, a quarter note, and a quarter note. The time signature $\frac{5}{4}$ is indicated at the end of the staff.

225 嗚咽地



musical notation for measure 225, starting with a half note, followed by a quarter rest, a quarter note, a quarter rest, a quarter note, a quarter rest, a quarter note, and a quarter rest. The time signature $\frac{5}{4}$ is indicated at the beginning of the staff.

255 (約 $\bullet = 52 - 54$)

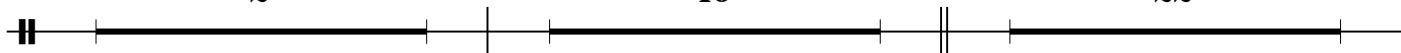
2

較自由地，悽苦，思念

10

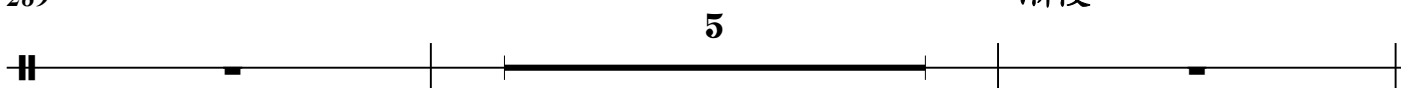
清空的，回憶的，稍慢

22



musical notation for measure 255, starting with a double bar line and a fermata, followed by a half note, a quarter rest, a quarter note, and a quarter rest. The time signature $\frac{5}{4}$ is indicated at the end of the staff.

289 (彭修文取消289小節)



musical notation for measure 289, starting with a double bar line and a fermata, followed by a half note, a quarter rest, a quarter note, and a quarter rest. The time signature $\frac{5}{4}$ is indicated at the end of the staff.

296 夢

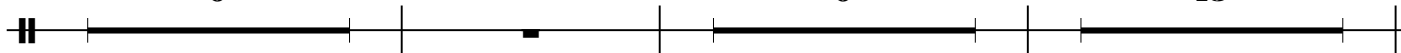
9

驚夢

9

稍快

13



musical notation for measure 296, starting with a double bar line and a fermata, followed by a half note, a quarter rest, a quarter note, and a quarter rest. The time signature $\frac{5}{4}$ is indicated at the end of the staff.

328

三、大轟懸，關山萬里共雪寒

15

漸慢



musical notation for measure 328, starting with a double bar line and a fermata, followed by a half note, a quarter rest, a quarter note, and a quarter rest. The time signature $\frac{5}{4}$ is indicated at the end of the staff.

Allargando 威武雄壯地

344 [大鈸]



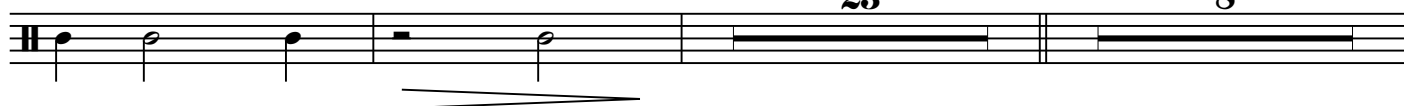
348



352



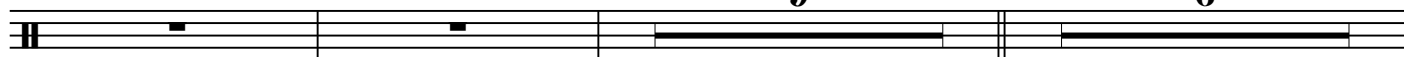
356



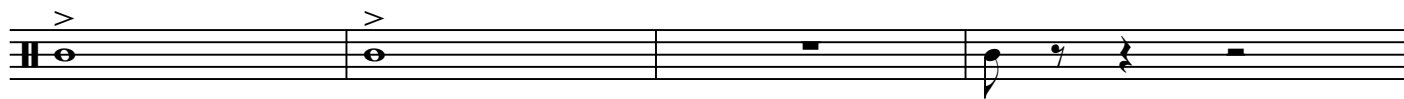
389

(389a)

(389b)



405



409



413

